

## Drug Facts

### Active ingredients

Camphor 3.1%	Topical analgesic
Capsaicin 0.025%	Topical analgesic
Menthol 10%	Topical analgesic
Methyl salicylate 15%	Topical analgesic

### Purposes

### Uses

Temporarily relieves minor aches and pains of muscles and joints associated with:

- arthritis
- simple backache
- sprains
- strains
- bruises

### Warnings

#### For external use only

- avoid contact with eyes. If eye contact occurs, rinse thoroughly with water.

#### Do not use

- on wounds or damaged skin
- with a heating pad
- if you are allergic to any ingredients in this product

#### Ask a doctor before use if you have

- redness over the affected area

#### When using this product

- do not bandage tightly

#### Stop use and ask a doctor if

- condition worsens or if symptoms last for more than 7 days
- symptoms clear up and occur again within a few days
- rash, itching or skin irritation develops

If pregnant or breast-feeding, ask a health professional before use. Keep out of reach of children. If swallowed, get medical help or contact a Poison Control Center right away.

### Directions

- use only as directed
- adults and children 12 years and older: apply to affected area not more than 3 to 4 times daily
- children under 12 years of age: consult your doctor
- wash hands after applying

**Other information** ■ store between 20-25°C (68-77°F)

### Inactive ingredients

carbomer homopolymer, cetyl alcohol, cetyl esters wax, emulsifying wax, oleth-3-phosphate, purified water, sodium hydroxide, stearic acid

**Questions or comments?** Call toll-free 1-800-88-ADVIL

Distributed by: Haleon, Warren, NJ 07059

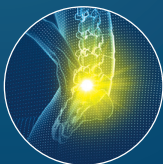
© 2023 Haleon group of companies or its licensor.

Trademarks are owned by or licensed to the Haleon group of companies.

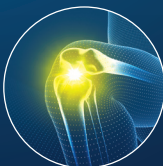
For most recent product information, visit [www.Advill.com](http://www.Advill.com)

Made in Canada

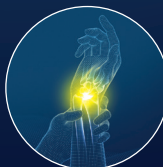
# DEEP PENETRATING RELIEF



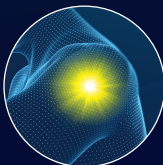
BACK &  
BODY ACHEs



ARTHRITIS &  
JOINT PAIN



SPRAINS &  
STRAINS



SORE  
MUSCLES

NEW

HALEON

DOES NOT CONTAIN THE SAME  
ACTIVE INGREDIENT AS ADVIL

# Advil

## TARGETED RELIEF

### PAIN RELIEVING CREAM

# 4

POWERFUL  
PAIN FIGHTING  
INGREDIENTS



Arthritis &  
Joint Pain



Back &  
Body Aches



Sprains &  
Strains



Sore  
Muscles



MASSAGE  
APPLICATOR

FOR EXTERNAL USE ONLY

NET WT. 71 g (2.5 oz)

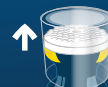
STARTS WORKING  
ON CONTACT

FOR UP TO  
8 HOURS  
OF

UP TO  
8 HRS

POWERFUL  
RELIEF

HOW TO USE



Pull off transparent  
cover. Unscrew  
applicator cap



Use key on applicator  
cap to remove star  
seal on tube



Screw applicator cap  
back and pull yellow  
part open



Squeeze tube to  
release cream and  
apply to skin



Clean applicator  
with a towel or  
absorbent paper

Do not use if safety seal on tube  
nozzle is broken or missing.



3 05736 55545 0